

User Manual(WIFI Smart Switch)

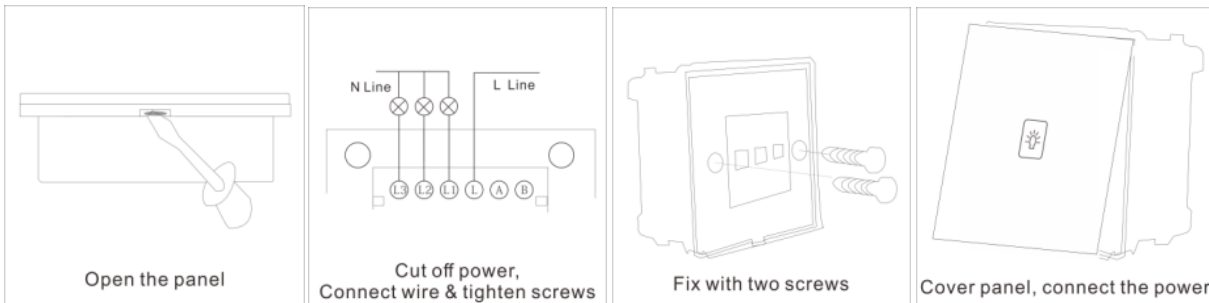


Please read the instructions carefully before installation. The manufacturers will not be responsible for any failure operations not follow the instructions.

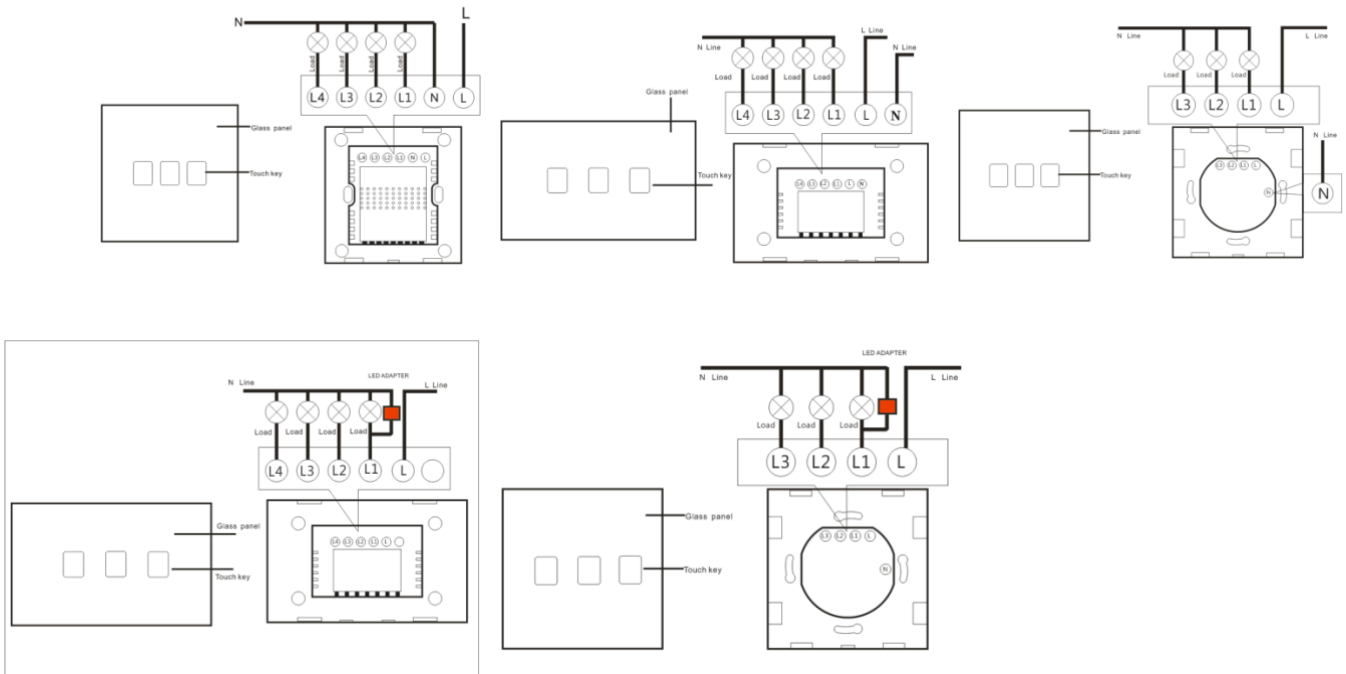
Special attentions:

- 1- Don't install with power.
- 2- Strictly in accordance with the product wiring diagram.
- 3- Don't work over load.

I. Installation Steps:



II. Wiring Diagram:



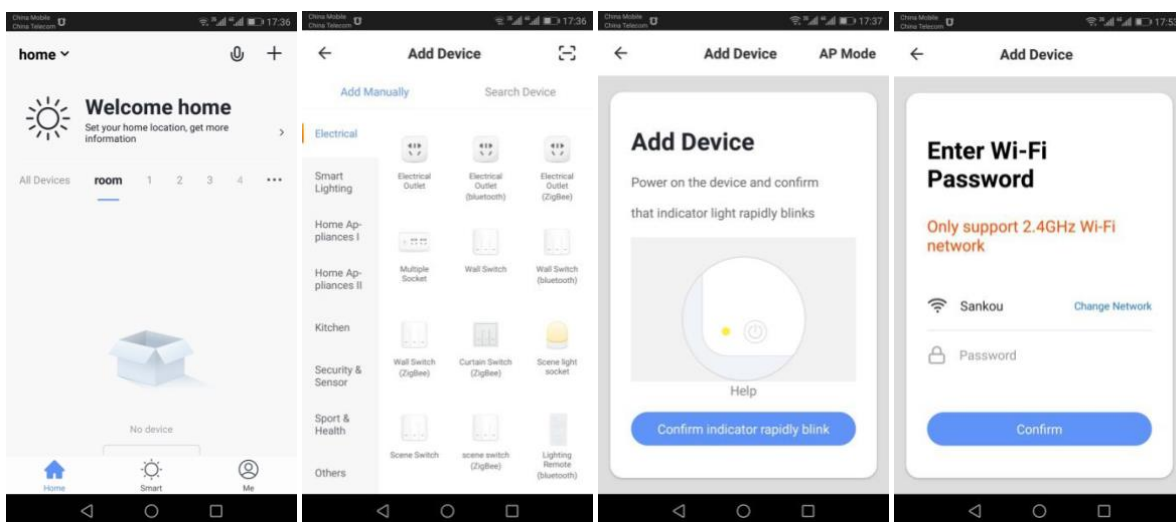
III. Program APP to control the WIFI Switch:

1- Scan the QR code, download the APP.

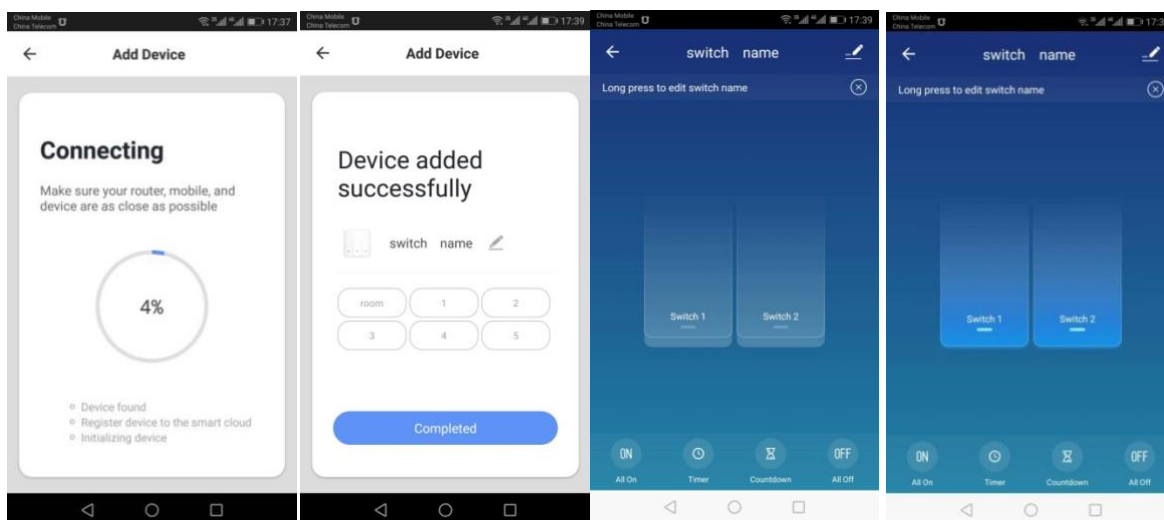


2- Pairing:

- (1) Press the touch button and hold for about 7 seconds until the WiFi LED blinks fast.
- (2) Click the '+' button on APP. Click next step, then 'Wi-Fi network' then enter the router password;



3- State show and setting scheduled

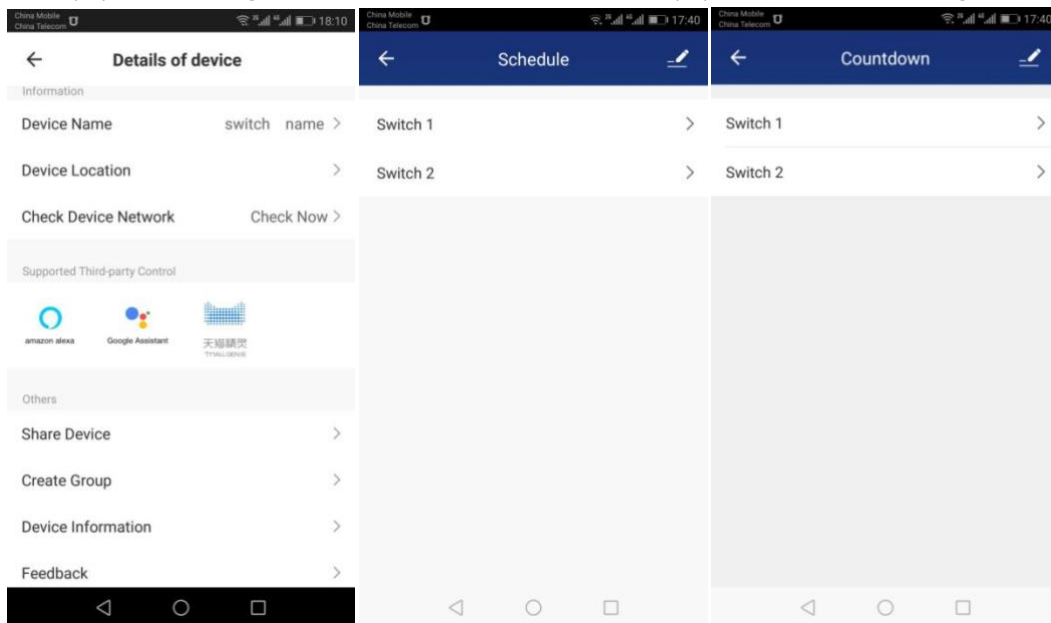


Connect successful

State: show one switch on

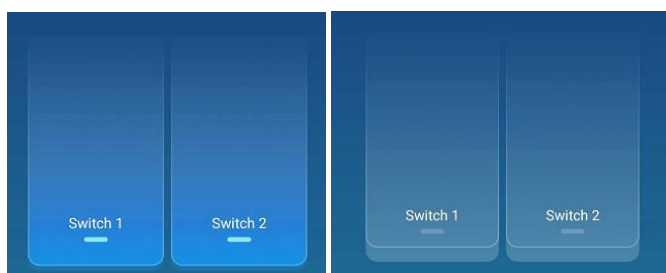
switch settings

4- Equipment management: Click the '+' button on APP, equipment delete or setting.



5- APP Display Description:

- (1) Blue back light: The device is ON.
- (2) Gray back light: The device is OFF.



Working state

Off state

6- Questions: My device on the app stays "Off line"?

Answer: The new added device needs 1min to connect to WiFi and the Internet. If it stays off line for a long time, please judge the problem by the WiFi LED status:

WiFi LED quickly blinks one time every second, device failed to connect to your WiFi:

- (1) Maybe you have entered wrong WiFi password.
- (2) Device is too far away from your WiFi. Please take it closer.
- (3) Device can not be added to the 5G-wifi-router, only the 2.4G-wifi is ok.
- (4) Make sure your router is MAC-open.

If still failed, try to open a mobile hot spot and add again.

WiFi LED quickly blinks twice every second: Device has connected to WiFi but failed to connect to server. Please check your network connectivity.

III. How to pair the remote of the on/off only 1way remote switch

- 1- Press the touch button and hold until you hear one 'Beep'
- 2- Press the remote key that you want to pair and you will hear another 'beep'
- 3- Press the touch button three times, each time will lead to a 'Beep'.

Note: For multi gang switches, each button on the switch needs to be paired by repeating the above steps.

IV. How to clear the setting.

- 1- Press the touch button and hold, until you hear continuous four 'Beep', done!

Note: Please note that for multi gang switches only needs once clearing.

VIII. Specification:

- 1- Rated Voltage: AC110V/AC220V
- 2- Rated Frequency: 50HZ/60HZ
- 3- Self Power Consuming: $\leq 0.1\text{mA}$
- 4- Rated Power:
 - Neutral & Live Line series: 1-2000w
 - Single Live Line low power series: 5-200W/gang
 - Single Live Line high power series: 5-2000W
- 5- UK series Dimension: 86mm*86mm*33mm.
US series Dimension: 118mm*72mm*34mm.
EU series Dimension: 86mm*86mm*35mm. 80mm*80mm*35mm.