

# SMART ACCESS CONTROLLER

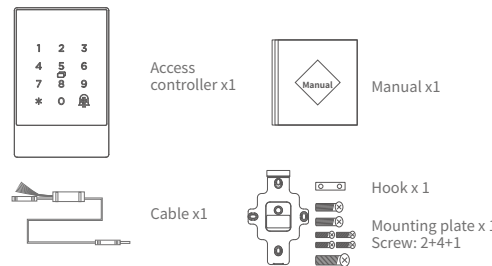
# WL60BTWL50BT

Manual

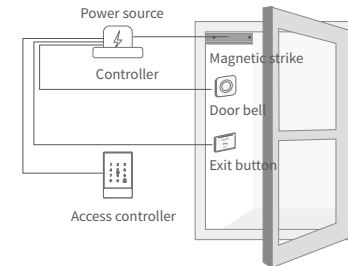
## Smart Access Controller WL60BT/WL50BT

Model :	WL60BT/WL50BT
Dimensions :	W79mm x H125mm x T15.5mm
Material :	Aluminum frame/Tempered glass panel
Communication :	Bluetooth 4.1
Supporting systems :	Android 4.3/IOS7.0 above
Stand-by current :	≈5mA
Operating current :	≈1A
Power supply :	12V
Unlocking time :	≈1.5S
Waterproof level :	IP66
Card capacity :	20,000 Cards

## Accessories



## Illustration

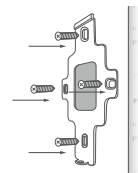


- 1 Drill a hole for the cable
- 2 Install the mounting plate

Drill a hole at appropriate position to make space for the cable to connect to the power source.

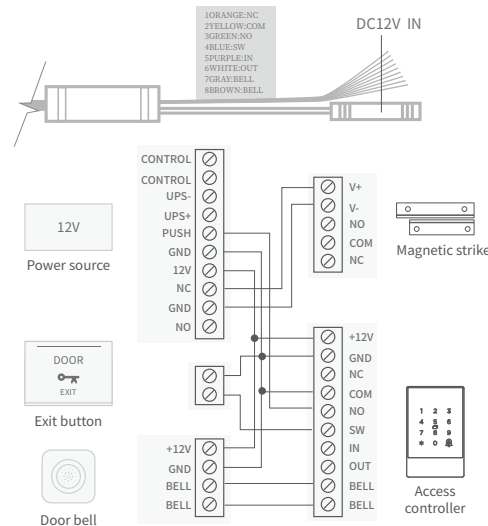


Fix the mounting plate with 4 screws.



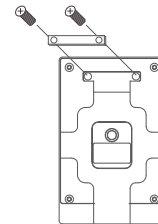
## 3 Wiring

Connect the cable of the access controller to power cable and other ports according to the illustration.



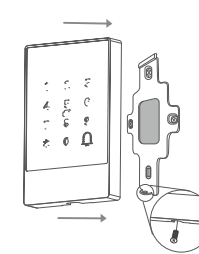
## 4 Install the hook

Fix the hook to the mounting plate with 2 screws.



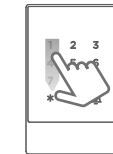
## 5 Install the access controller

Fit the access controller into the hook and fix it on the mounting plate with a screw in the bottom.

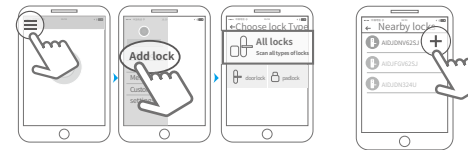


## Pair the access controller with app

- 1 Tap the panel to light it up and activate the lock.
- 2 On voice prompt "Please add Bluetooth Administrator", activate the APP.



- 3 Tap the "☰" icon on the upper left corner, tap "+Add Lock", select "Door Lock".
- 4 Tap the device shown on the screen. Wait a few seconds till the lock gives a voice prompt/long beep, which means it is added successfully.



⚠ Notice: If fails, please shut off the APP and Bluetooth, turn them on and try the above process again.

## Limited Warranty

1. For any defect in material and workmanship, the original purchaser of the product
  - 1) Can return or ask for a replacement within 7 invoice days.
  - 2) Can ask for a replacement within 15 invoice days.
  - 3) Can ask for free repair in 365 invoice days.
2. This warranty does not cover defects caused by modification, alteration, misuse or physical abuse of the product.