

Product Feature



Indicator



USB charging



Reset Button



Touch Screen panel (Handle)
Material:ABS+Zinc-Alloy
Size:95X23.5x9.5MM

Lock case
Material:ABS
Size:84X56.5x23MM

Striking Plate
Material:ABS
Size:73.3X24.2x12MM



Screw
M4X18 (Panel and Lock case)
ST3X20 (Striking Plate)



Connecting Wire
Size:100MM

Access Control	1-10 digit user code
	Override code
Voltage	4.5V
Static Current	$\leq 20\mu A$
Dynamic Current	$\leq 220mA$
Working Temperature	0°C~55°C
Working Humidity	RH20%~80%
Low voltage	3.6V \pm 0.2V
Life Time	>100,000time opening
Door Thickness	>12MM

Feature

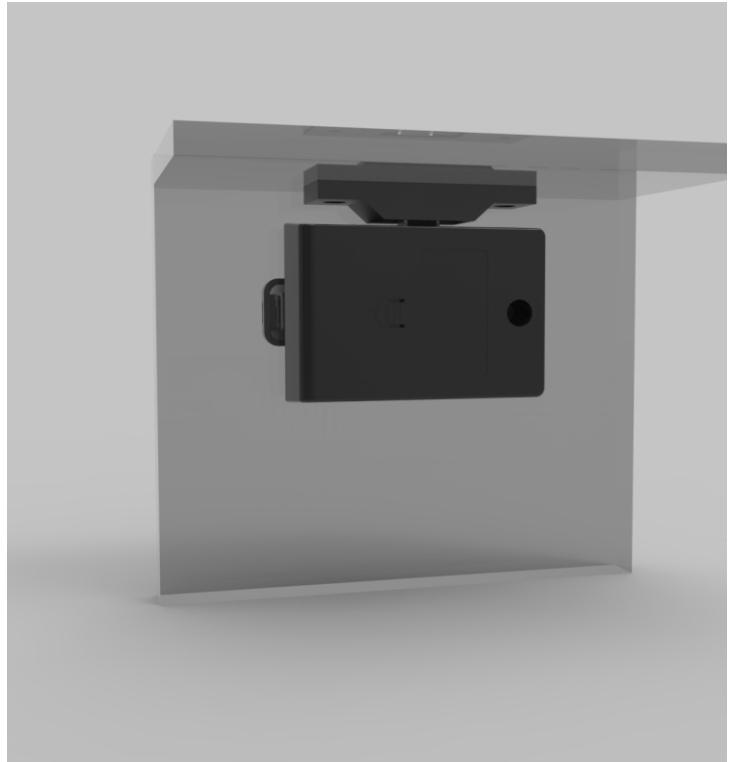
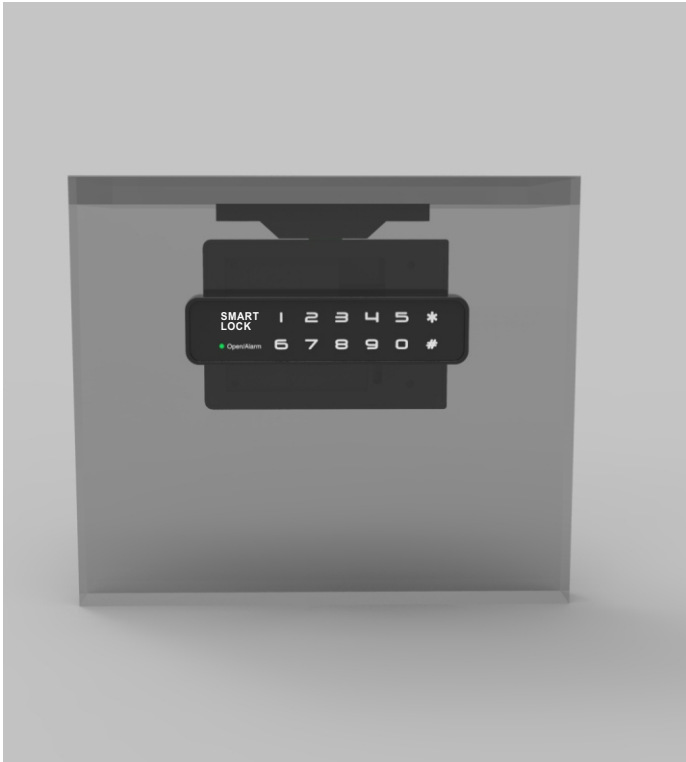
1. Digital and Keyless, intelligent control.
2. Programmable 1-10 digit code, master code and user code
3. Motorized locking mechanism, automatically
4. Two mode for application, for individual use and public use
5. Easy to use and integrated installation
6. Widely used in drawer, locker, cabinet etc.
7. Standard for door thickness 16-22MM, more than 22MM ,need shorter or longer crews for installation

Application

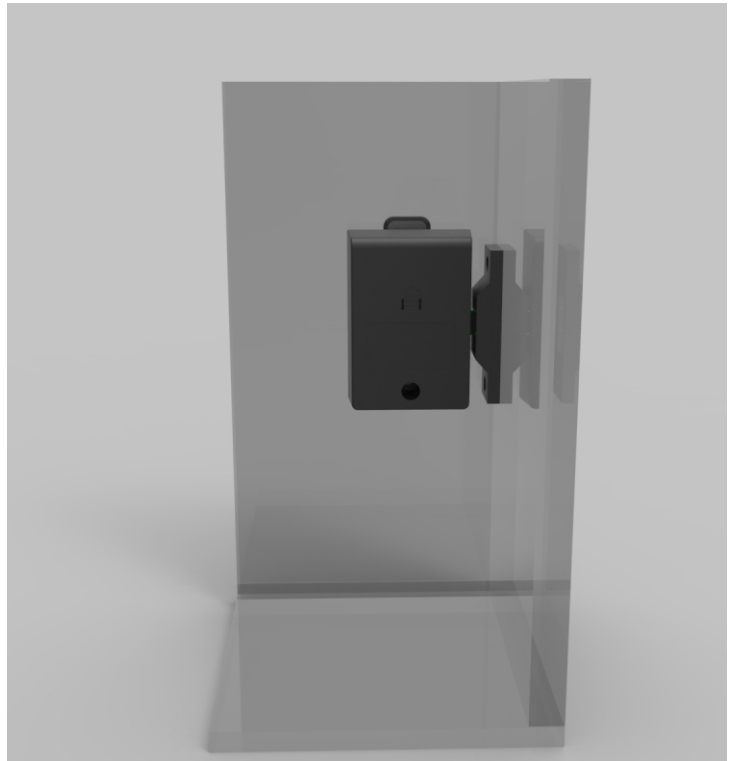
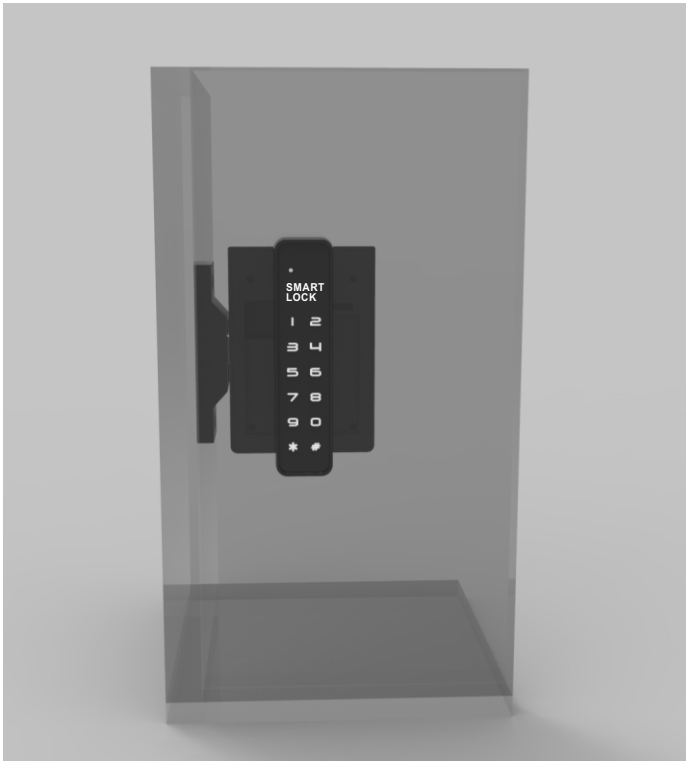


Installation

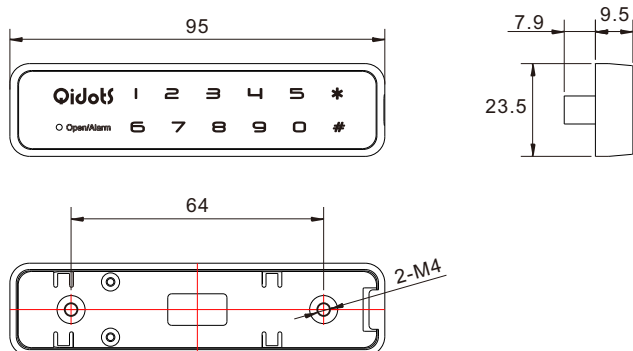
Drawer



Cabinet



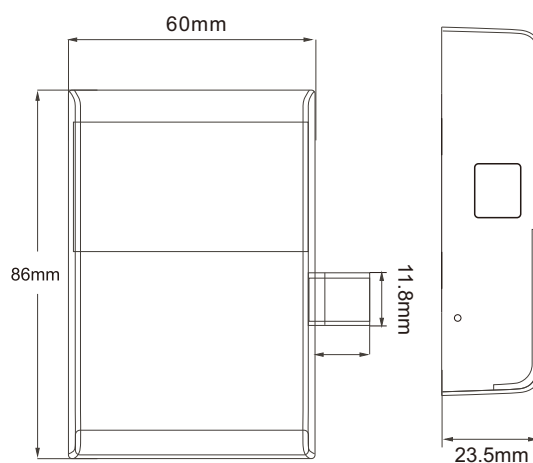
Line drawing



Panel



Lock case



Striking Plate

